

«Θαλάσσια έρευνα στην περιοχή της Σαντορίνης-Αμοργού»

Νομικού Παρασκευή

Καθηγήτρια

Τμήμα Γεωλογίας και Γεωπεριβάλλοντος

ΕΚΠΑ

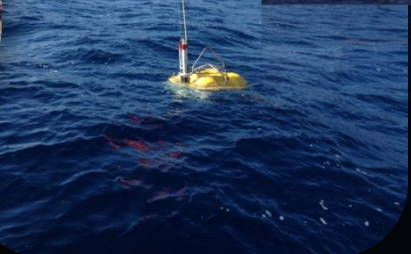
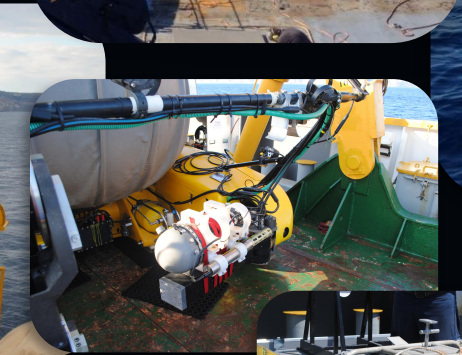
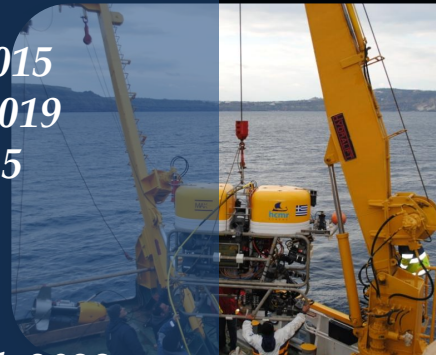


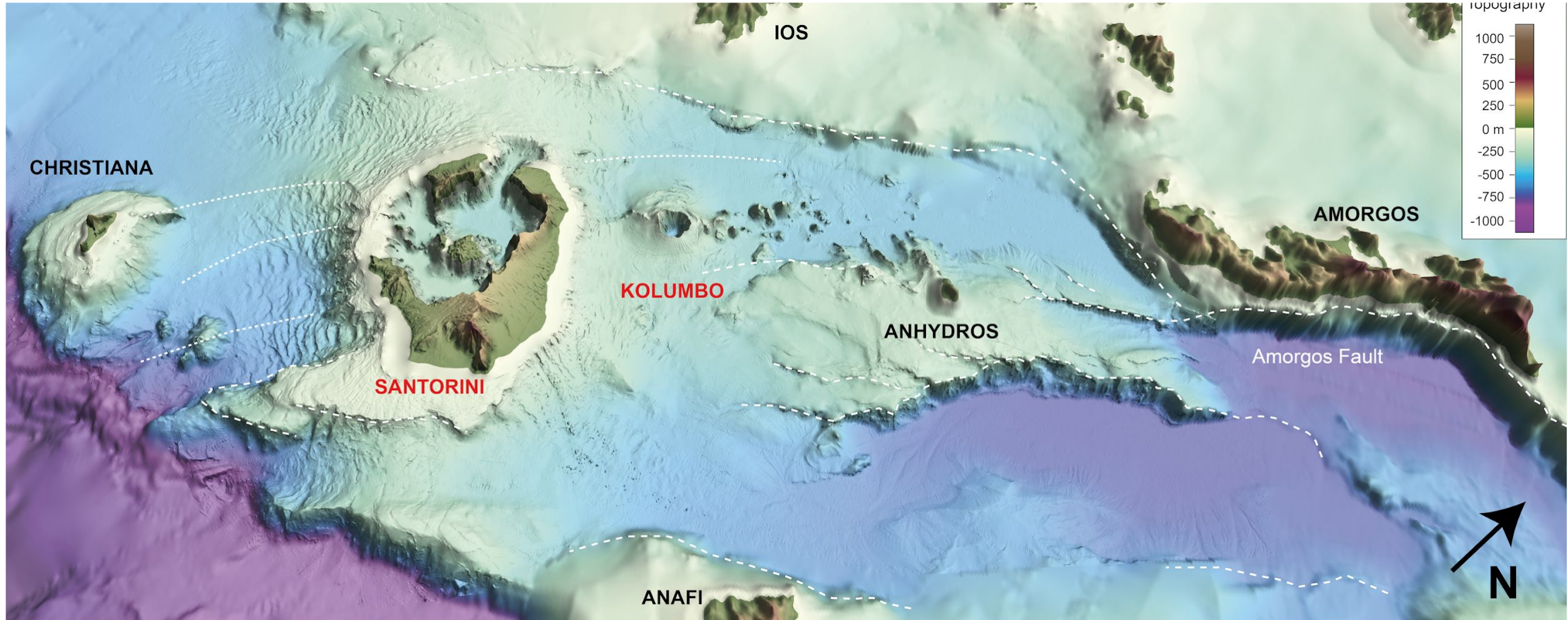
ΕΛΛΗΝΙΚΗ ΔΗΜΟΚΡΑΤΙΑ
Εθνικόν και Καποδιστριακόν
Πανεπιστήμιον Αθηνών
ΙΔΡΥΘΕΝ ΤΟ 1837





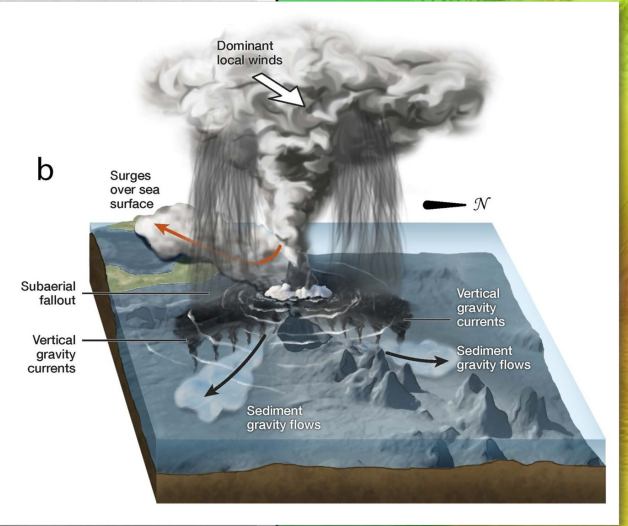
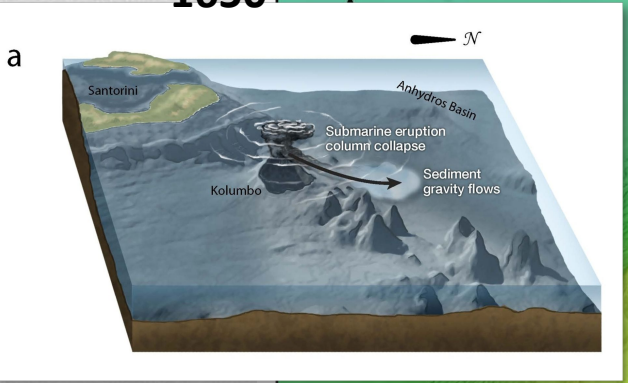
R/V AEGEAO: 2001, 2006, 2012, 2013, 2014, 2023
R/V ENDEAVOR: 2015
E/V NAUTILUS: 2010, 2011
R/V MARCUS LANGSETH: 2015
R/V POSEIDON: 2006, 2017, 2019
YPAPANTI shuttle boat: 2015
OCEAN LINK: 2019
R/V EUROPE: 2022, 2023
E/V FILIA: 2022, 2023
JOIDES Resolution: Dec 2022-Feb 2023
MARIA MERIAN Dec 2024





(Nomikou et al., 2019; Preine et al., 2022)

Έκρηξη 1650

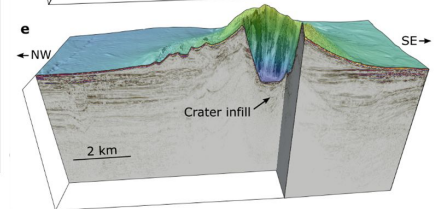
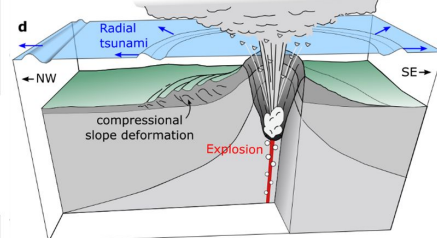
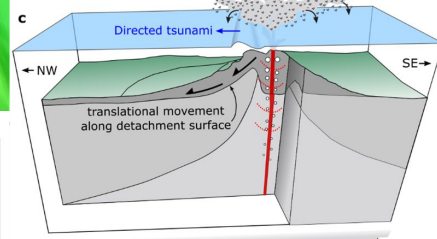
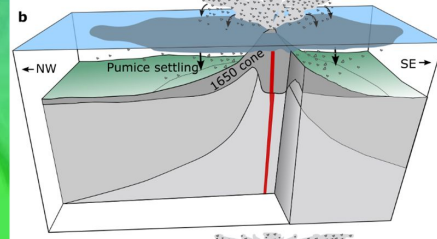
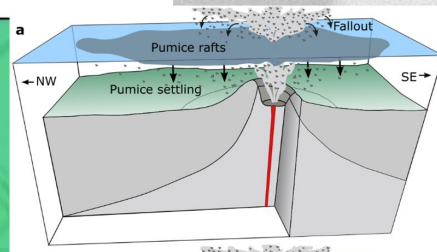
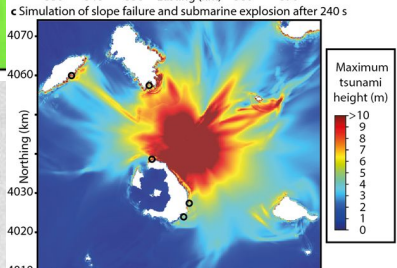
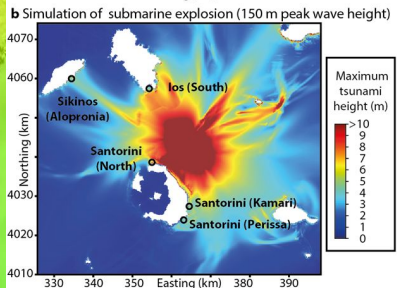
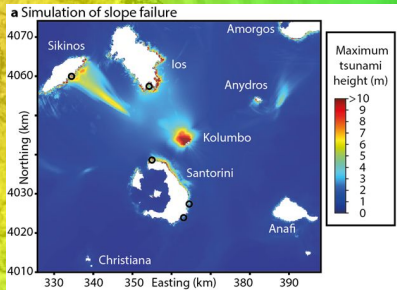


(Fuller et al., 2018)



(Nomikou et al., 2022)

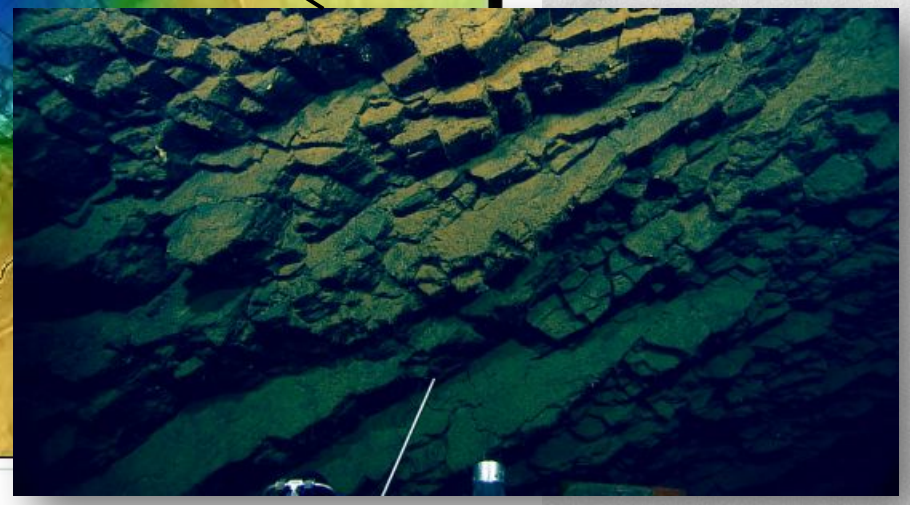
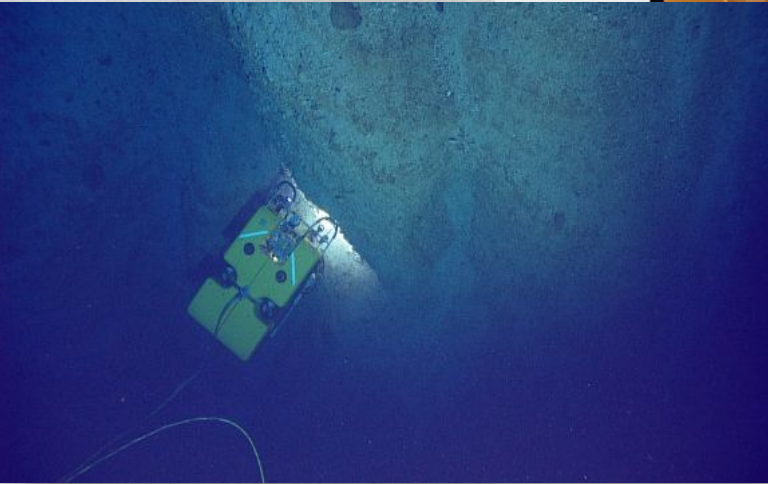
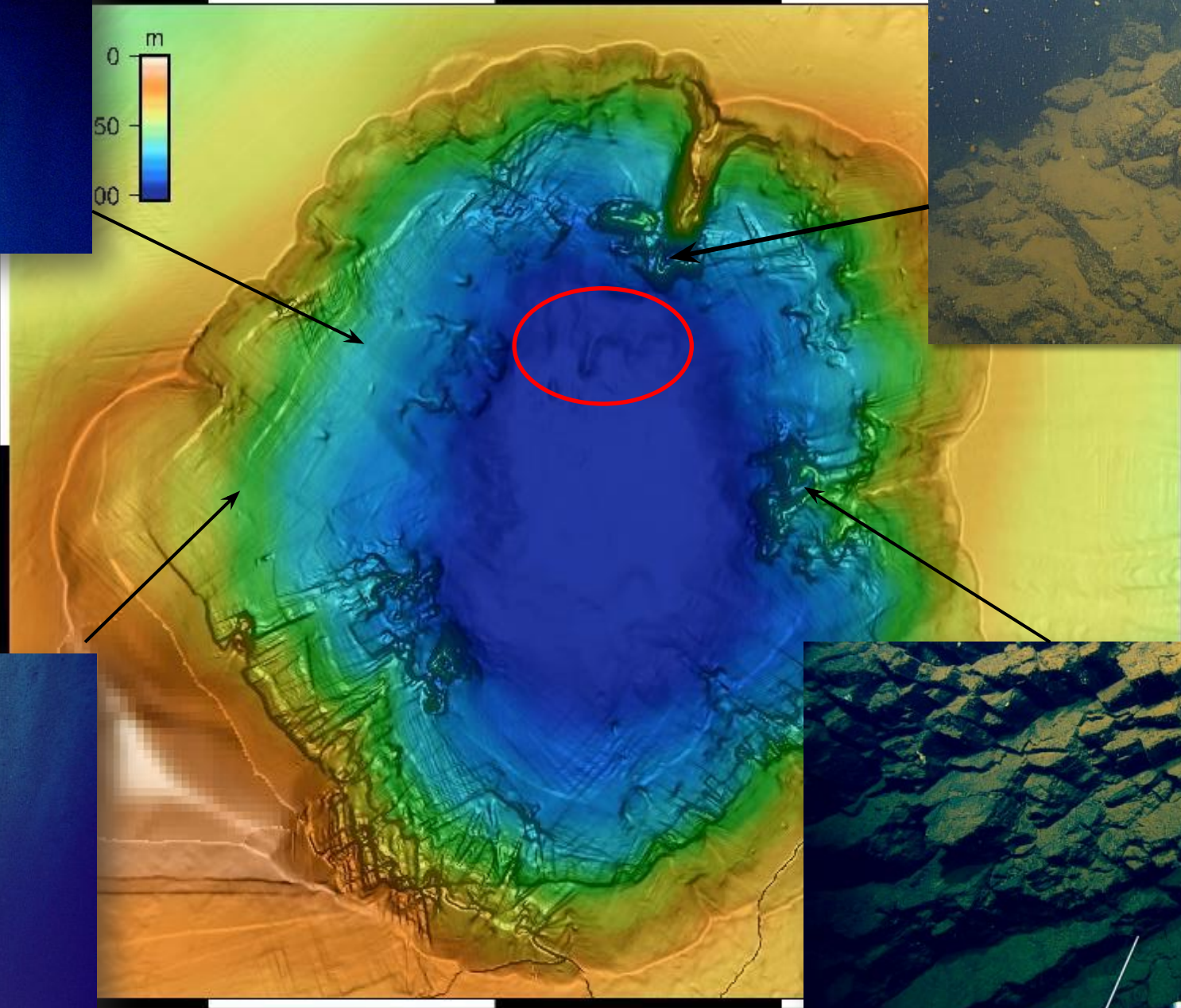
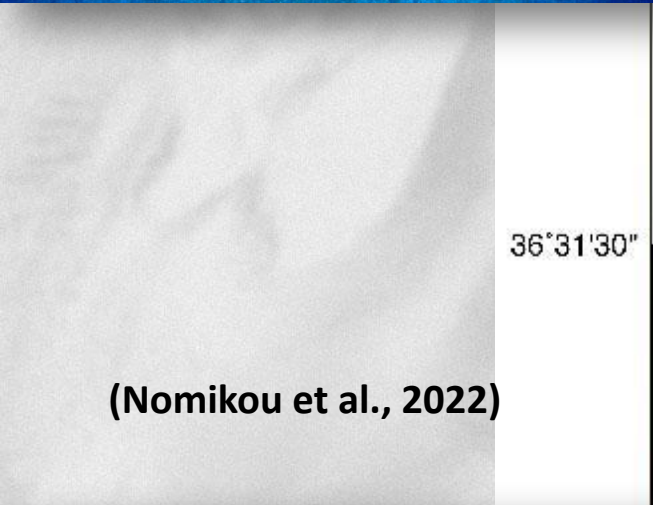
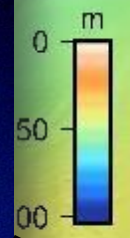
Τσουνάμι 1650



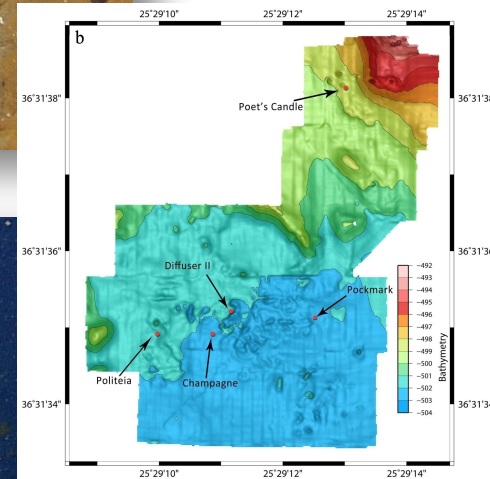
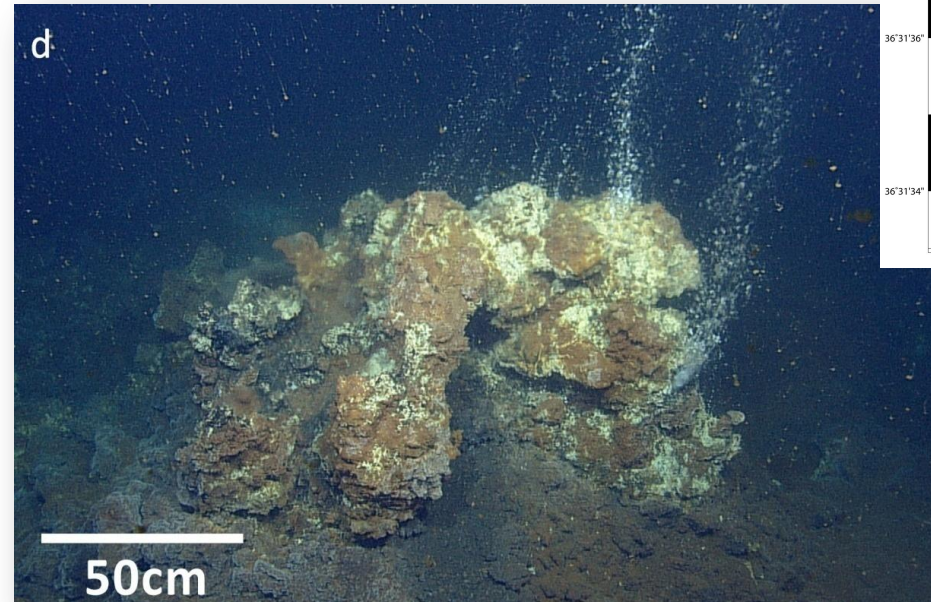
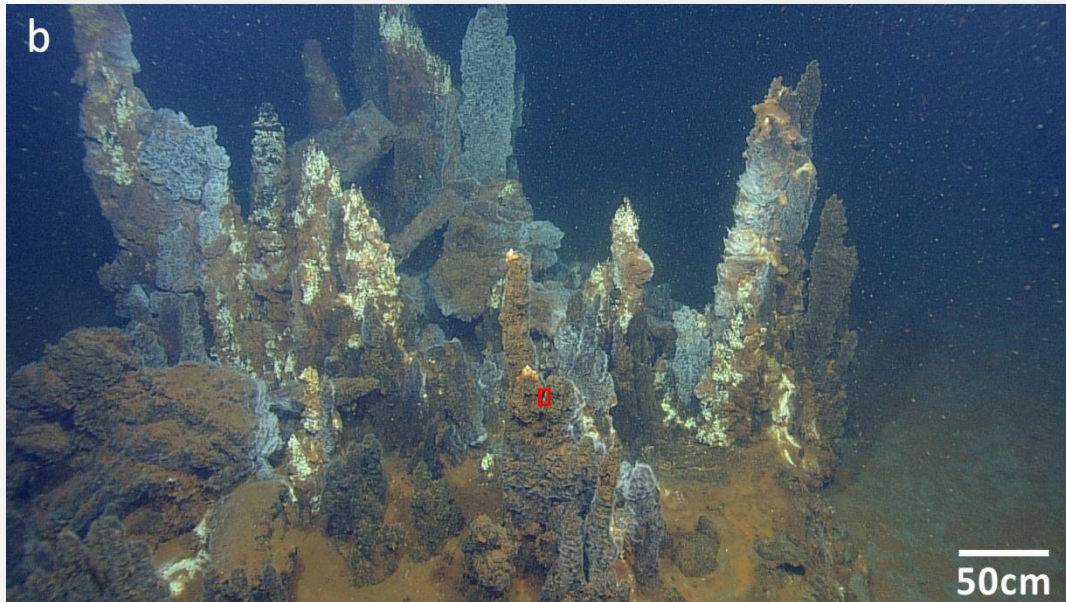
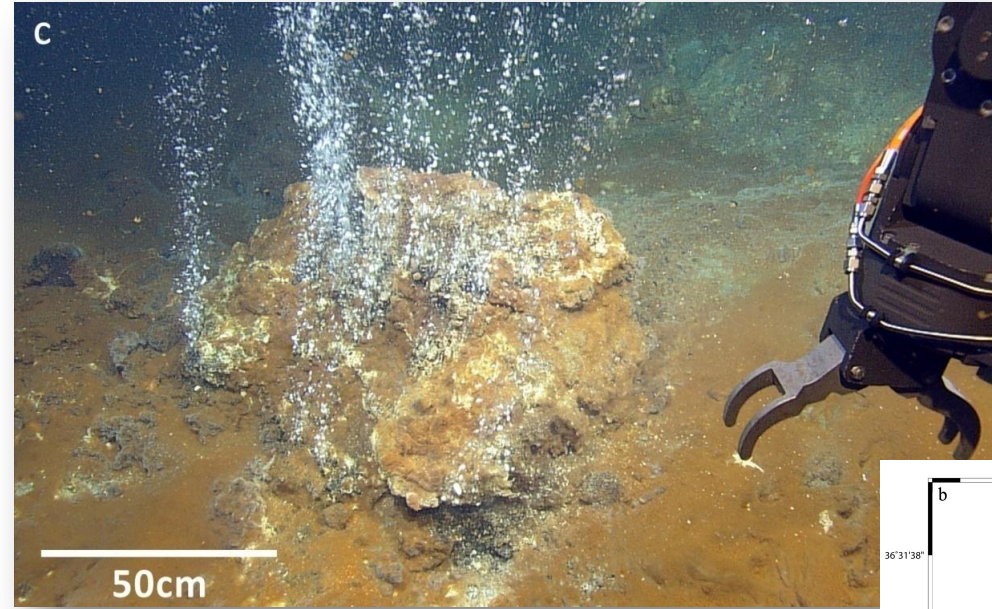
(Karsten et al., 2023)



25°28'30" 25°29'00" 25°29'30"



Υδροθερμικό Πεδίο Κολούμπου



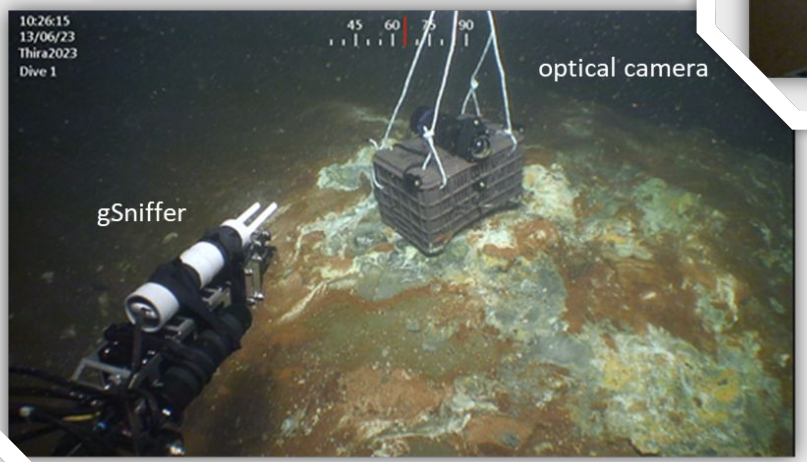
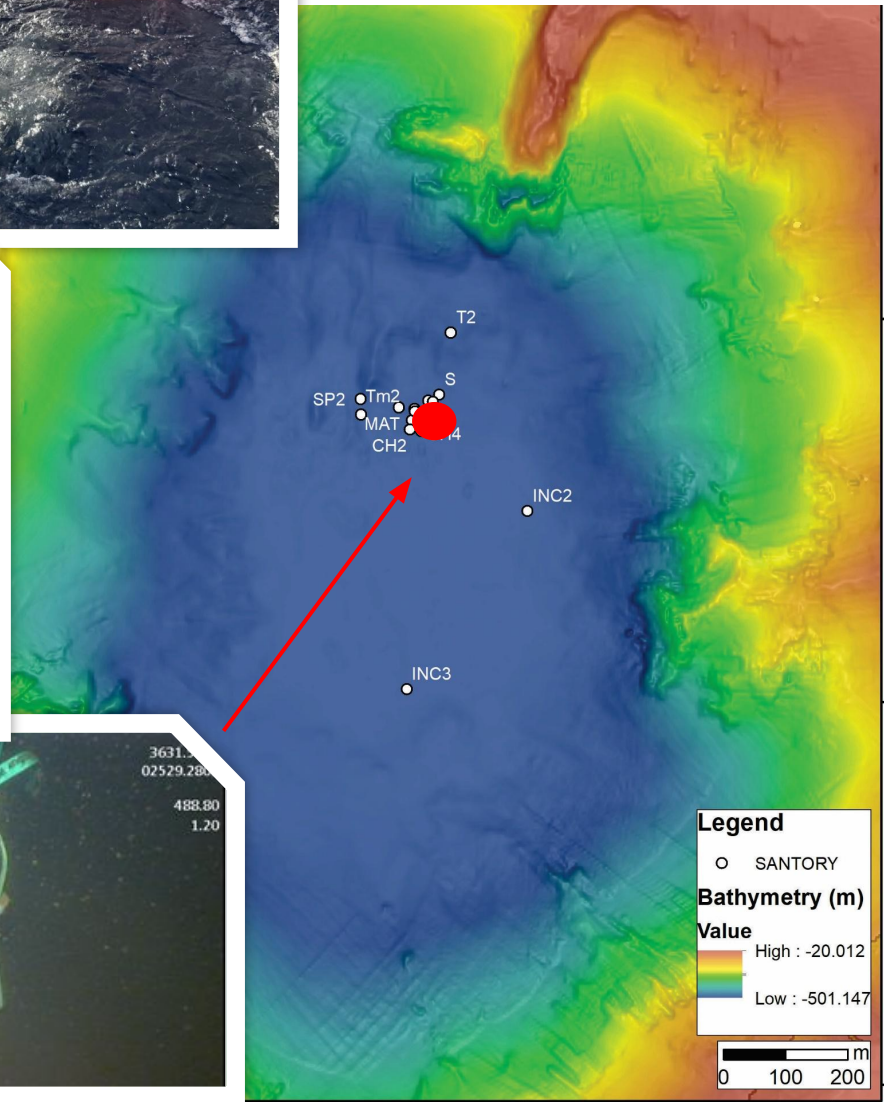
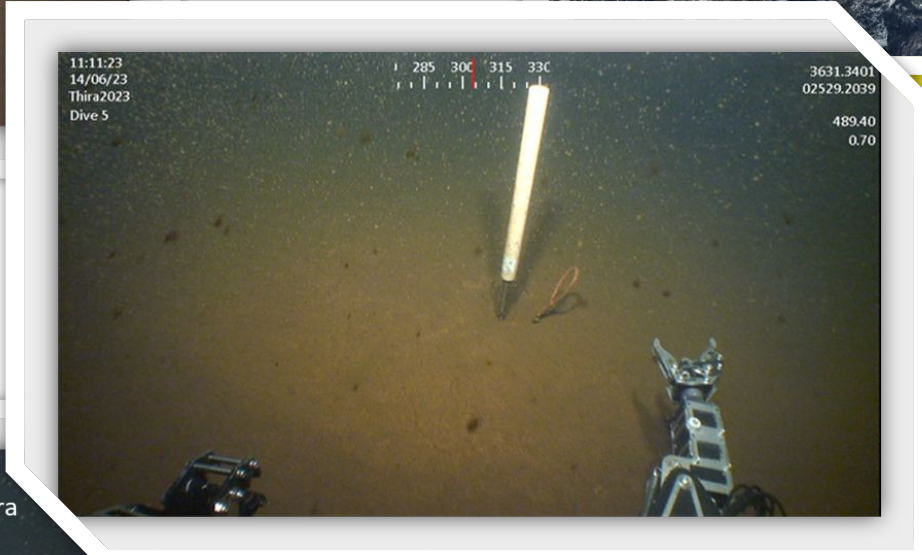
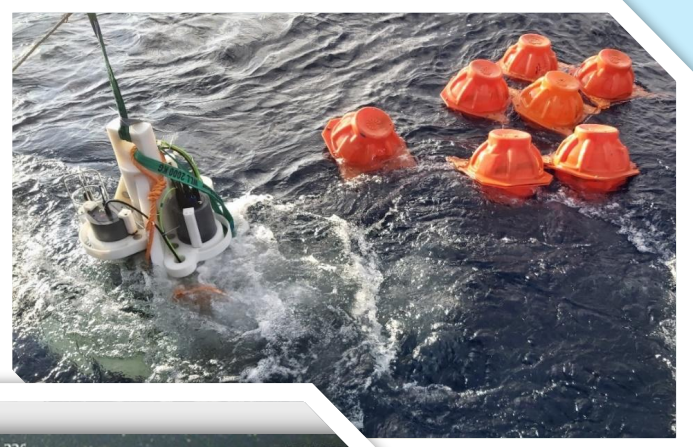
(Carey et al., 2013)

Παρακολούθηση Κολούμπου Δεκέμβριος 2022-Οκτώμβριος 2023



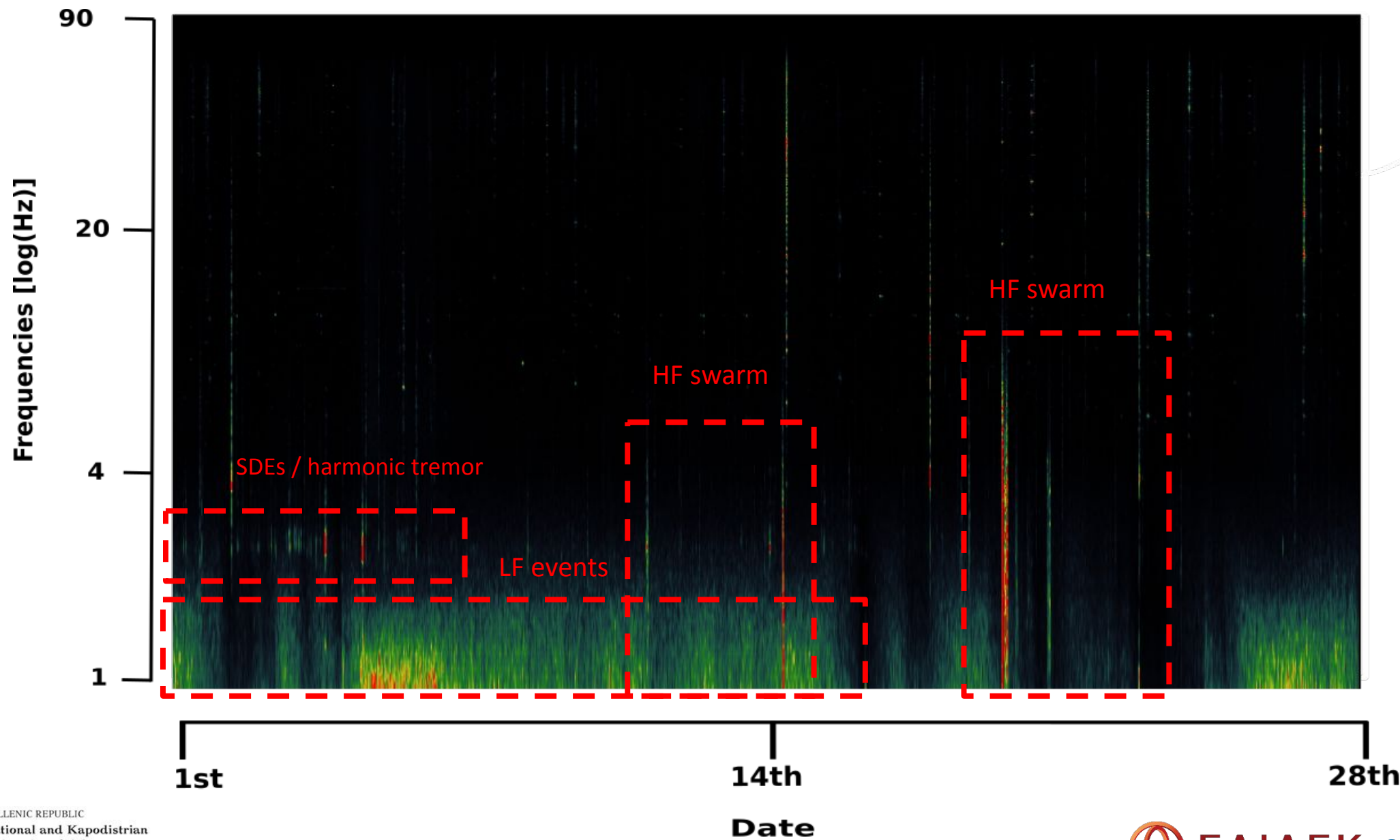
SANTORY

ΕΛΙΔΕΚ
Ελληνικό Ίδρυμα Έρευνας & Καινοτομίας

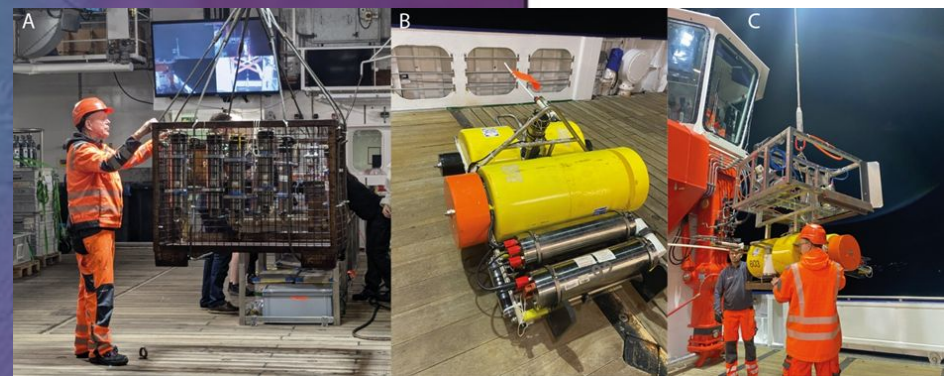
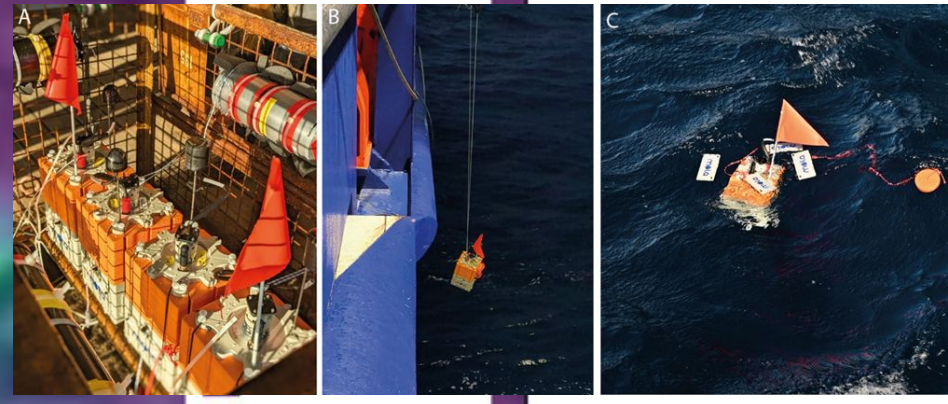
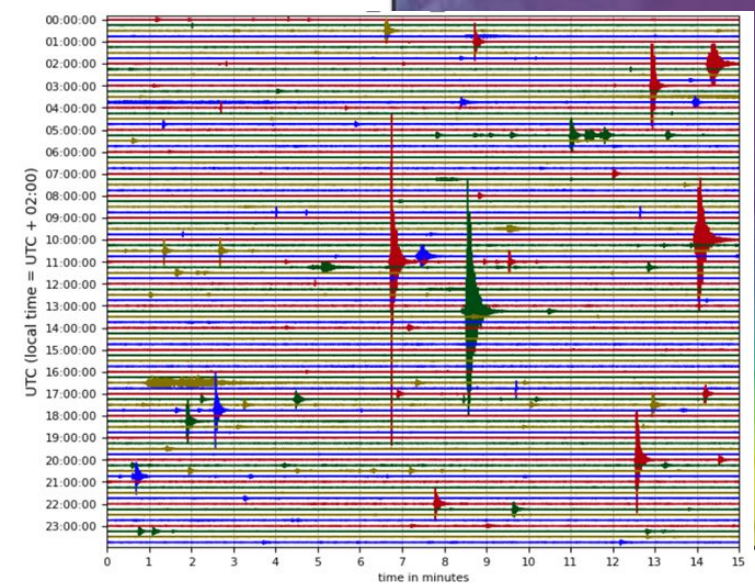
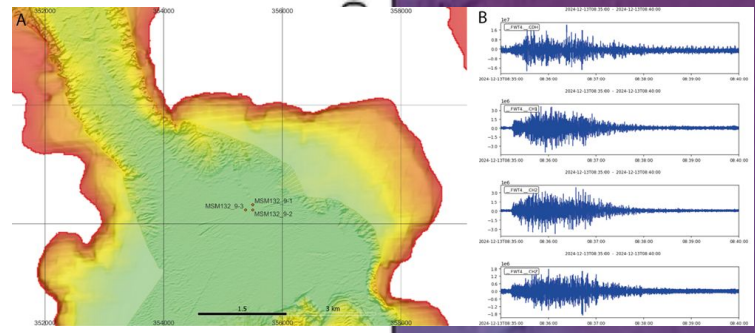
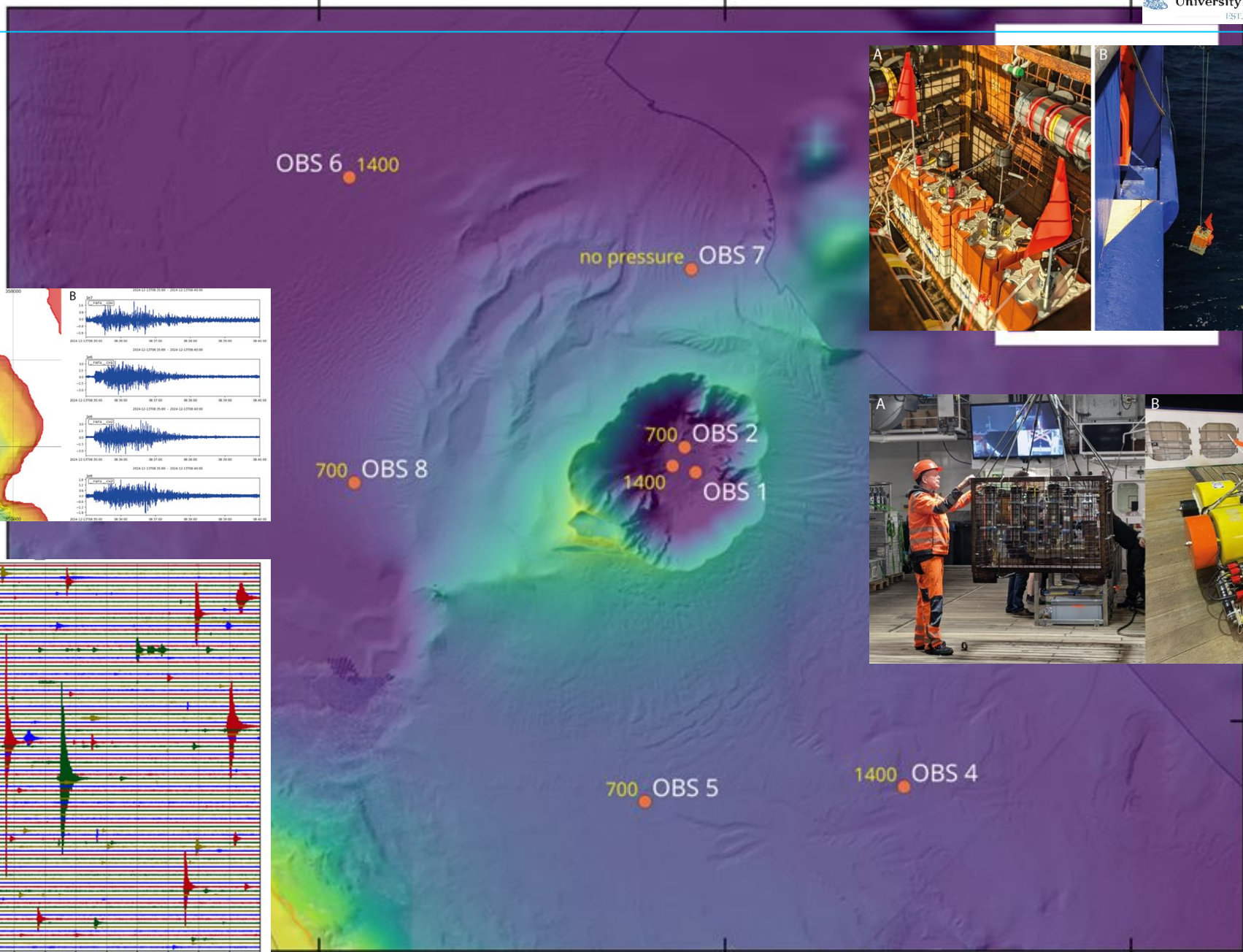


(Nomikou et al., 2022)

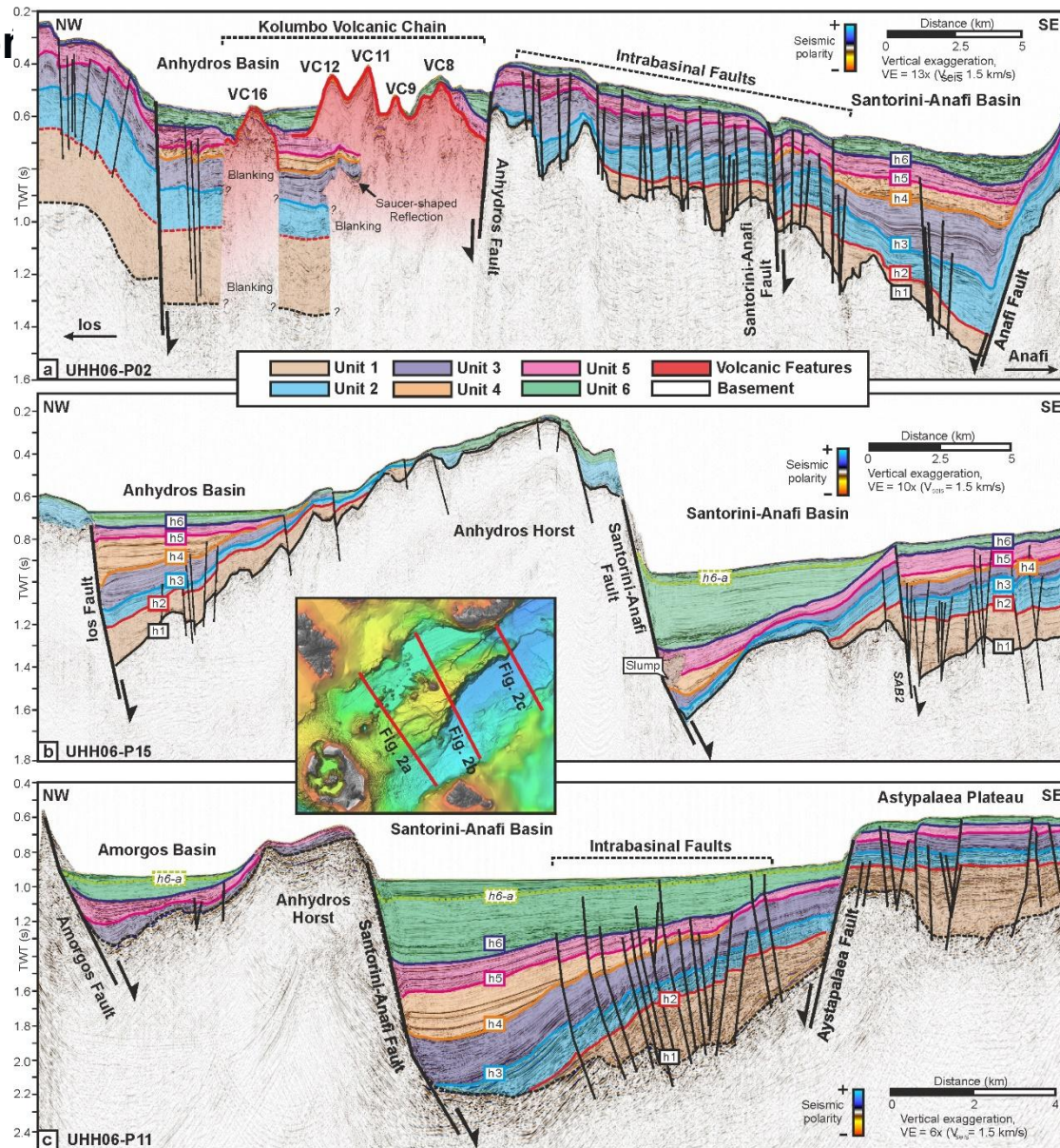
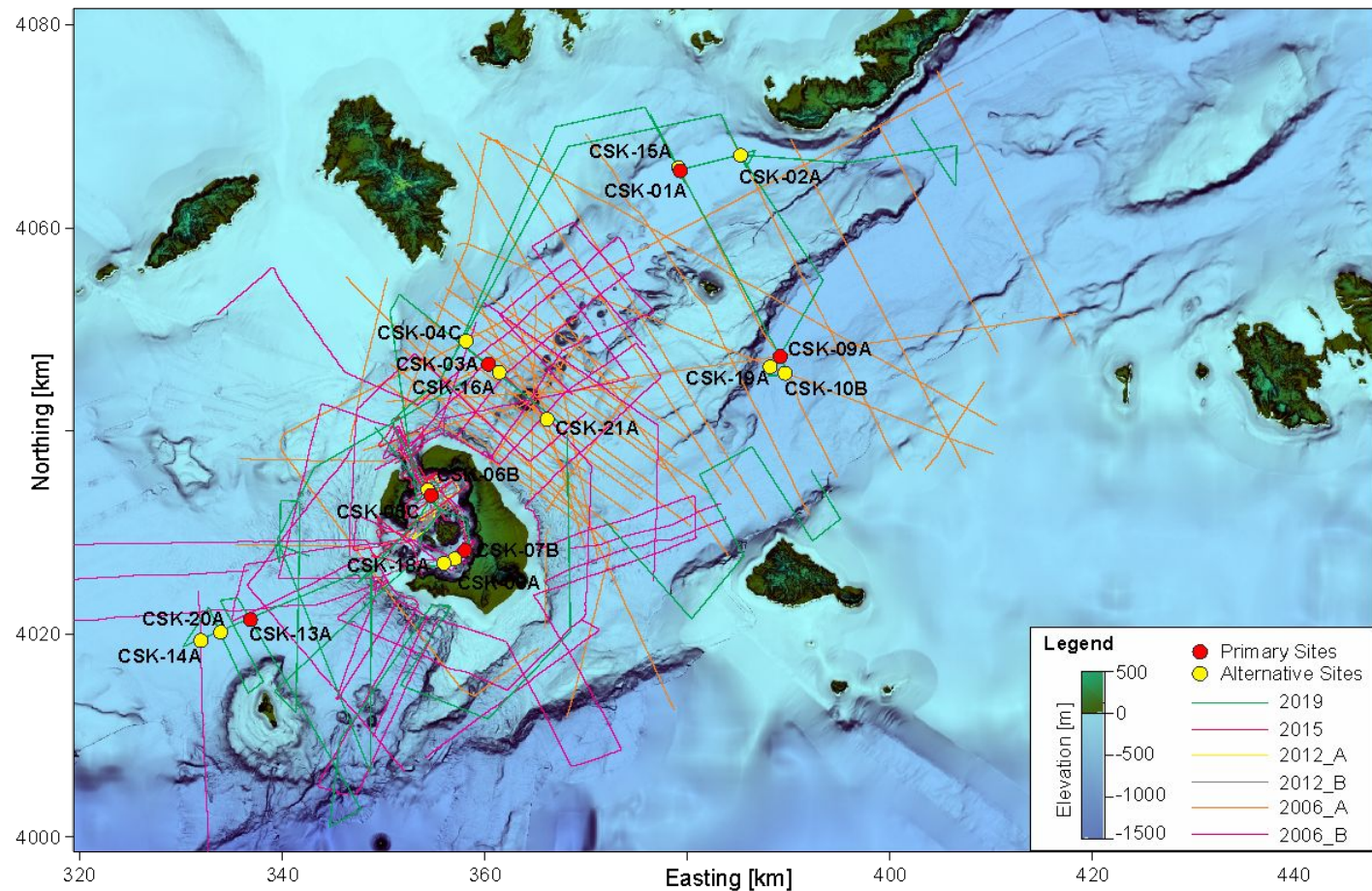
Ακουστικά Δεδομένα



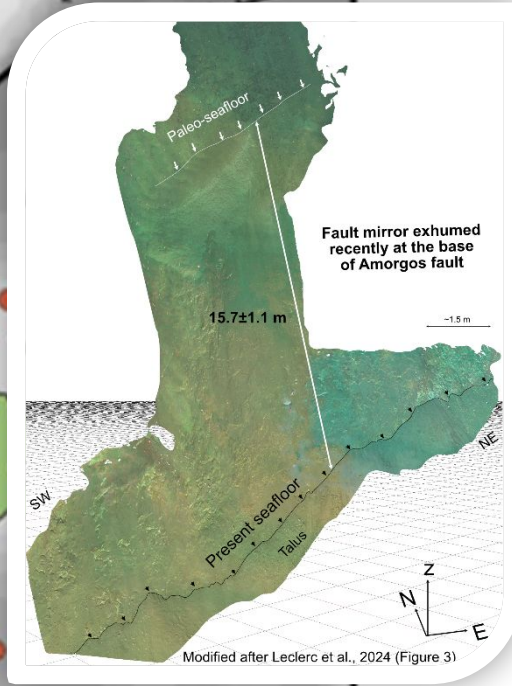
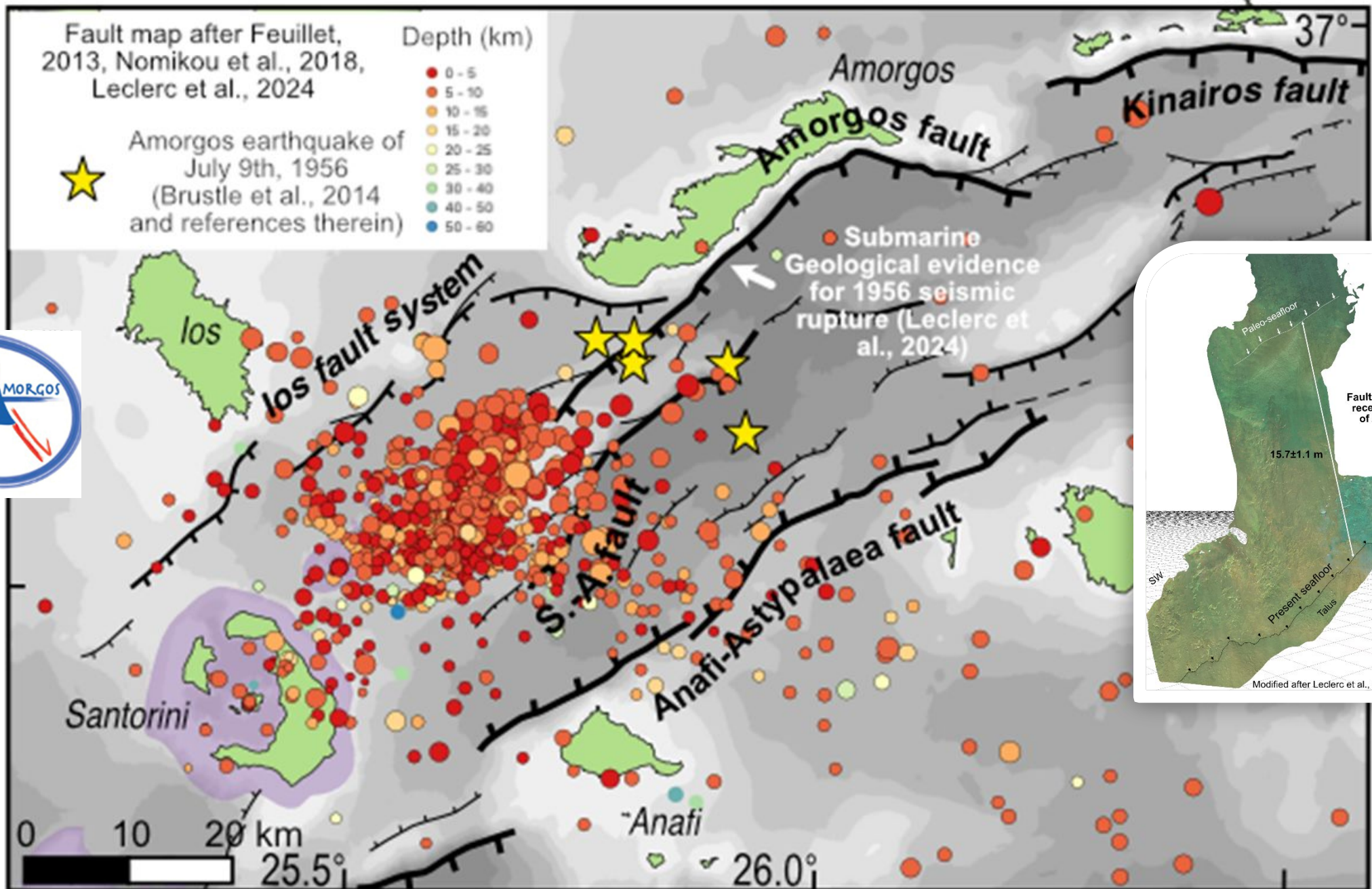
Δεκέμβριος 2024

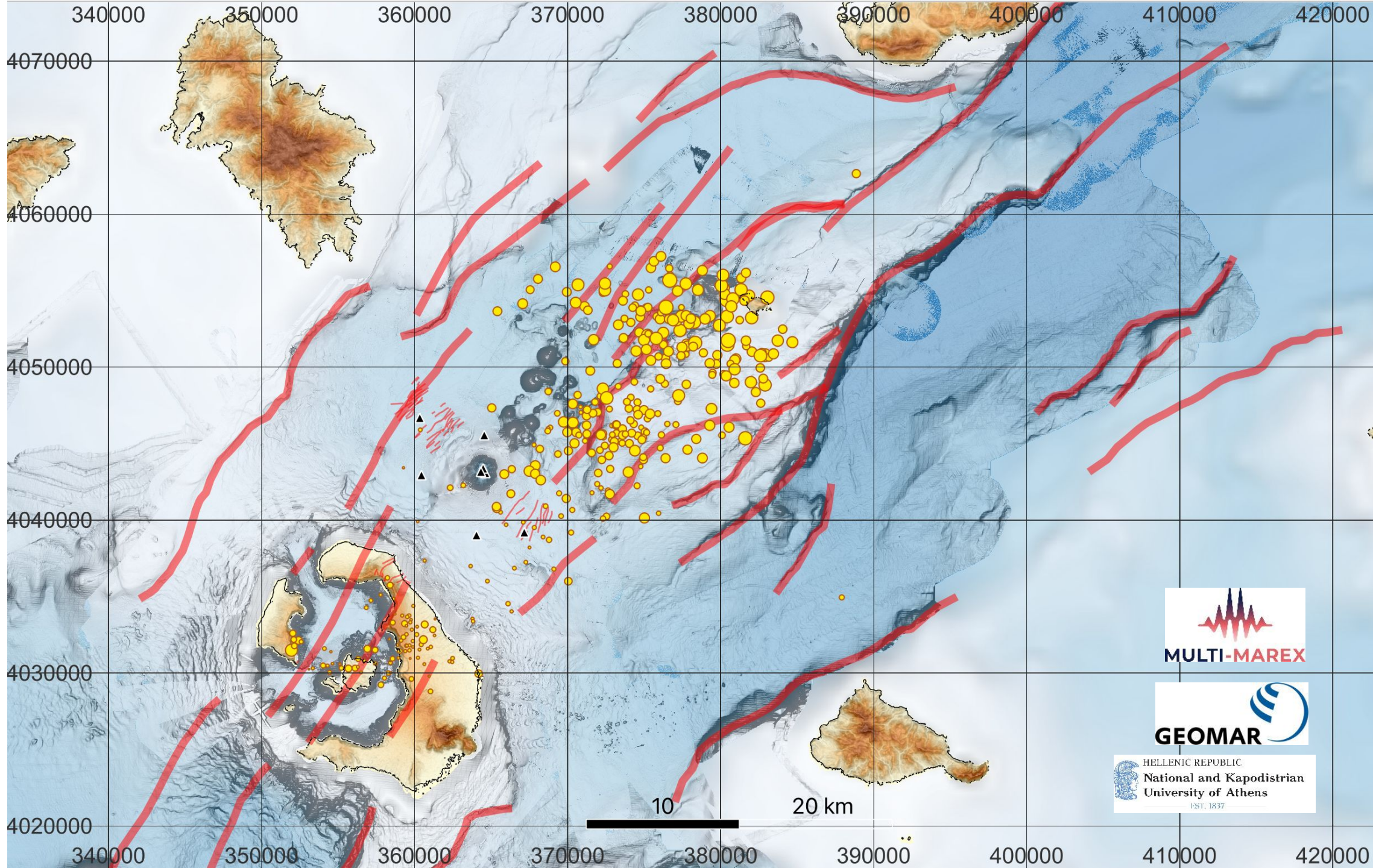


Γεωφυσικά Δεδομένα και Υποθαλάσσιες ερευνητικές γεωτρή



(Preine et al., 2022)





MULTI-MAREX

GEOMAR

HELLENIC REPUBLIC
National and Kapodistrian
University of Athens
EST. 1837